



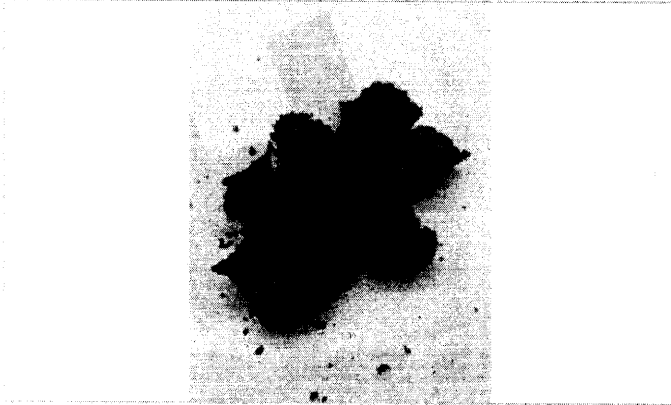
Excelbis Labs
1920 E Warner Avenue
Santa Ana, CA 92705

(714) 340-7099
http://excelbislabs.com
Lic# C3-0000059-LIC

Apple Sherbet

Strain: Apple Sherbet
Matrix: Plant
Type: Flower - Cured
Sample Size: ; Batch:

Produced:
Collected: 07/18/2024
Received: 07/18/2024
Completed: 07/23/2024



Summary

Test	Date Tested	Result
Batch		Pass
Cannabinoids	07/21/2024	Complete
Heavy Metals	07/23/2024	Pass
Microbials	07/23/2024	Pass
Moisture	07/21/2024	15.8% - Complete
Mycotoxins	07/23/2024	Pass
GCMS Pesticides	07/23/2024	Pass
LCMS Pesticides	07/23/2024	Pass
Water Activity	07/21/2024	NR - Complete

Cannabinoids

Complete

31.585% Total THC	0.228% Total CBD	32.634% Total Cannabinoids
-----------------------------	----------------------------	--------------------------------------

Analyte	LOD	LOQ	Result	Result
	mg/g	mg/g	%	mg/g
CBC	0.009	0.025	ND	ND
CBD	0.025	0.100	0.2283	2.283
CBDa	0.019	0.050	ND	ND
CBDV	0.125	1.000	ND	ND
CBG	0.019	0.050	0.1618	1.618
CBGa	0.125	0.250	ND	ND
CBN	0.009	0.050	ND	ND
Δ8-THC	0.025	0.100	ND	ND
Δ9-THC	0.019	0.100	0.2738	2.738
THCa	0.013	0.050	35.7021	357.021
THCV	0.025	0.100	0.6597	6.597
Total THC			31.585	315.846
Total CBD			0.228	2.283
Total CBG			0.162	1.618
Total			32.634	326.344

Date Tested: 07/21/2024

Total THC = THCa * 0.877 + Δ9-THC; Total CBD = CBDa * 0.877 + CBD; Total CBG = CBGa * 0.877 + CBG.
Total Cannabinoids = Total THC + Total CBD + Total CBG + minor cannabinoids.
Cannabinoids: HPLC, CAN-SOP-001
Water Activity: Water Activity Meter, WA-SOP-001
Moisture Content: Moisture Analyzer, MO-SOP-001
Foreign Matter: Visual Inspection, FM-SOP-001

Dr. Jerry White PhD Bryan Zahakaylo

Jerry White, PhD
Chief Scientific Officer
07/23/2024

Bryan Zahakaylo
Analyst
07/23/2024

Confident LIMS
All Rights Reserved
coa.support@confidentlims.com
(866) 506-5866
www.confidentlims.com



ND = Not Detected, NR = Not Reported, LOD = Limit of Detection, LOQ = Limit of Quantitation. This product has been tested by Excelbis Labs LLC using valid testing methodologies and a quality system as required by state law. All LQC samples were performed and met the prescribed acceptance criteria in 16 CCR section 5730, pursuant to 16 CCR section 5726(e)(13). Values reported relate only to the product tested. Excelbis Labs LLC makes no claims as to the efficacy, safety or other risks associated with any detected or non-detected levels of any compounds reported herein. This Certificate shall not be reproduced except in full, without the written approval of Excelbis Labs LLC.



Excelbis Labs
1920 E Warner Avenue
Santa Ana, CA 92705

(714) 340-7099
http://excelbilabs.com
Lic# C5-000059-LIC

QA Testing

2 of 3

Apple Sherbet

Strain: Apple Sherbet
Matrix: Plant
Type: Flower - Cured
Sample Size: ; Batch:

Produced:
Collected: 07/18/2024
Received: 07/18/2024
Completed: 07/23/2024

GC Pesticides

Pass

Analyte	LOD	LOQ	Limit	Mass	Status
	PPB	PPB	PPB	µg/g	
Captan	0.231	0.7	0.7	ND	Pass
Chlordane (trans + cis)	0.0116	0.035	0.0116	ND	Pass
Chlorfenapyr	0.0058	0.0175	0.0058	ND	Pass
Cyfluthrin	0.0231	0.07	2	ND	Pass
Cypermethrin	0.0231	0.07	1	ND	Pass
Parathion Methyl	0.0058	0.0175	0.0058	ND	Pass
Pentachloronitrobenzene (Quintozene)	0.0231	0.07	0.1	ND	Pass

Mycotoxins

Pass

Analytes	LOD	LOQ	Limit	Conc.	Status
	PPB	PPB	PPB	PPB	
Aflatoxin B1	1.7000	5.0000		ND	Tested
Aflatoxin B2	1.7000	5.0000		ND	Tested
Aflatoxin G1	1.7000	5.0000		ND	Tested
Aflatoxin G2	1.7000	5.0000		ND	Tested
Ochratoxin A	6.6000	20.0000	20	ND	Pass
Total Aflatoxins			20	ND	Pass

Microbials

Pass

Analyte	Limit	Detected / Not Detected	Status
	RFU/g	RFU/g	
Aspergillus flavus	0	Not Detected	Pass
Aspergillus fumigatus	0	Not Detected	Pass
Aspergillus niger	0	Not Detected	Pass
Aspergillus terreus	0	Not Detected	Pass
Shiga toxin-producing E. Coli	0	Not Detected	Pass
Salmonella SPP	0	Not Detected	Pass

Heavy Metals

Pass

Analyte	LOD	LOQ	Limit	Conc.	Status
	PPM	PPM	PPM	PPM	
Arsenic	0.0165	0.05	0.2	ND	Pass
Cadmium	0.0165	0.05	0.2	ND	Pass
Lead	0.0413	0.125	0.5	ND	Pass
Mercury	0.0032	0.01	0.1	ND	Pass

GCMS Date Tested: 07/23/2024
Pesticides: GC-MS/MS, GCMS Method GCP-SOP-001
LCMS Date Tested: 07/23/2024
Mycotoxins Footnote: Mycotoxins: LC-MS/MS, LCMS Method LCP-SOP-001
Microbial Date Tested: 07/23/2024
Microbials Footnote: Microbial: PCR-SOP-001
RFU = Relative Fluorescence Units
Heavy Metals Date Tested: 07/23/2024
Heavy Metals: Heavy Metals: ICP-MS, HM-SOP-001

Dr. Jerry White PhD Bryan Zahakaylo

Jerry White, PhD
Chief Scientific Officer
07/23/2024

Bryan Zahakaylo
Analyst
07/23/2024

Confident LIMS
All Rights Reserved
coa.support@confidentlims.com
(866) 506-5866
www.confidentlims.com



ND = Not Detected, NR = Not Reported, LOD = Limit of Detection, LOQ = Limit of Quantitation. This product has been tested by Excelbis Labs LLC using valid testing methodologies and a quality system as required by state law. All LQC samples were performed and met the prescribed acceptance criteria in 16 CCR section 5730, pursuant to 16 CCR section 5726(e)(13). Values reported relate only to the product tested. Excelbis Labs LLC makes no claims as to the efficacy, safety or other risks associated with any detected or non-detected levels of any compounds reported herein. This Certificate shall not be reproduced except in full, without the written approval of Excelbis Labs LLC.



Apple Sherbet

Strain: Apple Sherbet
Matrix: Plant
Type: Flower - Cured
Sample Size: ; Batch:

Produced:
Collected: 07/18/2024
Received: 07/18/2024
Completed: 07/23/2024

LC Pesticides

Pass

Analyte	LOD	LOQ	Limit	Result	Status	Analyte	LOD	LOQ	Limit	Result	Status
	µg/g	µg/g	µg/g	µg/g			µg/g	µg/g	µg/g	µg/g	
Abamectin	0.033	0.1	0.1	ND	Pass	Imazalil	0.033	0.1	0.033	ND	Pass
Acephate	0.033	0.1	0.1	ND	Pass	Imidacloprid	0.033	0.1	5	ND	Pass
Acequinocyl	0.033	0.1	0.1	ND	Pass	Kresoxim Methyl	0.033	0.1	0.1	ND	Pass
Acetamiprid	0.033	0.1	0.1	ND	Pass	Malathion	0.033	0.1	0.5	ND	Pass
Aldicarb	0.033	0.1	0.033	ND	Pass	Metaxyl	0.033	0.1	2	ND	Pass
Azoxystrobin	0.033	0.1	0.1	ND	Pass	Methiocarb	0.033	0.1	0.033	ND	Pass
Bifenazate	0.033	0.1	0.1	ND	Pass	Methomyl	0.033	0.1	1	ND	Pass
Bifenthrin	0.033	0.1	3	ND	Pass	Mevinphos	0.033	0.1	0.033	ND	Pass
Boscalid	0.033	0.1	0.1	ND	Pass	Myclobutanil	0.033	0.1	0.1	ND	Pass
Carbaryl	0.033	0.1	0.5	ND	Pass	Naled	0.033	0.1	0.1	ND	Pass
Carbofuran	0.033	0.1	0.033	ND	Pass	Oxamyl	0.033	0.1	0.5	ND	Pass
Chlorantraniliprole	0.033	0.1	10	ND	Pass	Paclobutrazol	0.033	0.1	0.033	ND	Pass
Chlorpyrifos	0.033	0.1	0.033	ND	Pass	Permethrin (trans + cis)	0.033	0.1	0.5	ND	Pass
Clofentezine	0.033	0.1	0.1	ND	Pass	Phosmet	0.033	0.1	0.1	ND	Pass
Coumaphos	0.033	0.1	0.033	ND	Pass	Piperonyl Butoxide	0.033	0.1	3	ND	Pass
Daminozide	0.033	0.1	0.033	ND	Pass	Prallethrin	0.033	0.1	0.1	ND	Pass
Diazinon	0.1	0.1	0.1	ND	Pass	Propiconazole	0.033	0.1	0.1	ND	Pass
Dichlorvos	0.033	0.1	0.033	ND	Pass	Propoxur	0.033	0.1	0.033	ND	Pass
Dimethoate	0.033	0.1	0.033	ND	Pass	Pyrethrins (Cinerin + Jasmolin + Pyrethrin)	0.0133	0.04	0.5	ND	Pass
Dimethomorph (I + II)	0.033	0.1	2	ND	Pass	Pyridaben	0.033	0.1	0.1	ND	Pass
Ethoprophos	0.033	0.1	0.033	ND	Pass	Spinetoram (J + L)	0.033	0.1	0.1	ND	Pass
Etofenprox	0.033	0.1	0.033	ND	Pass	Spinosyn (A + D)	0.033	0.1	0.1	ND	Pass
Etoxazole	0.033	0.1	0.1	ND	Pass	Spiromesifen	0.033	0.1	0.1	ND	Pass
Fenhexamid	0.033	0.1	0.1	ND	Pass	Spirotetramat	0.033	0.1	0.1	ND	Pass
Fenoxycarb	0.033	0.1	0.033	ND	Pass	Spiroxamine	0.033	0.1	0.033	ND	Pass
Fenpyroximate	0.033	0.1	0.1	ND	Pass	Tebuconazole	0.033	0.1	0.1	ND	Pass
Fipronil	0.033	0.1	0.033	ND	Pass	Thiacloprid	0.033	0.1	0.033	ND	Pass
Flonicamid	0.033	0.1	0.1	ND	Pass	Thiamethoxam	0.033	0.1	5	ND	Pass
Fludioxonil	0.033	0.1	0.1	ND	Pass	Trifloxystrobin	0.033	0.1	0.1	ND	Pass
Hexythiazox	0.033	0.1	0.1	ND	Pass						

LCMS Date Tested: 07/23/2024
Pesticides: LC-MS/MS, LCMS Method LCP-SOP-001

Dr. Jerry White PhD Bryan Zahakaylo

Jerry White, PhD
Chief Scientific Officer
07/23/2024

Bryan Zahakaylo
Analyst
07/23/2024

Confident LIMS
All Rights Reserved
coa.support@confidentlims.com
(866) 506-5866
www.confidentlims.com



ND = Not Detected, NR = Not Reported, LOD = Limit of Detection, LOQ = Limit of Quantitation. This product has been tested by Excelbis Labs LLC using valid testing methodologies and a quality system as required by state law. All LQC samples were performed and met the prescribed acceptance criteria in 16 CCR section 5730, pursuant to 16 CCR section 5726(e)(13). Values reported relate only to the product tested. Excelbis Labs LLC makes no claims as to the efficacy, safety or other risks associated with any detected or non-detected levels of any compounds reported herein. This Certificate shall not be reproduced except in full, without the written approval of Excelbis Labs LLC.